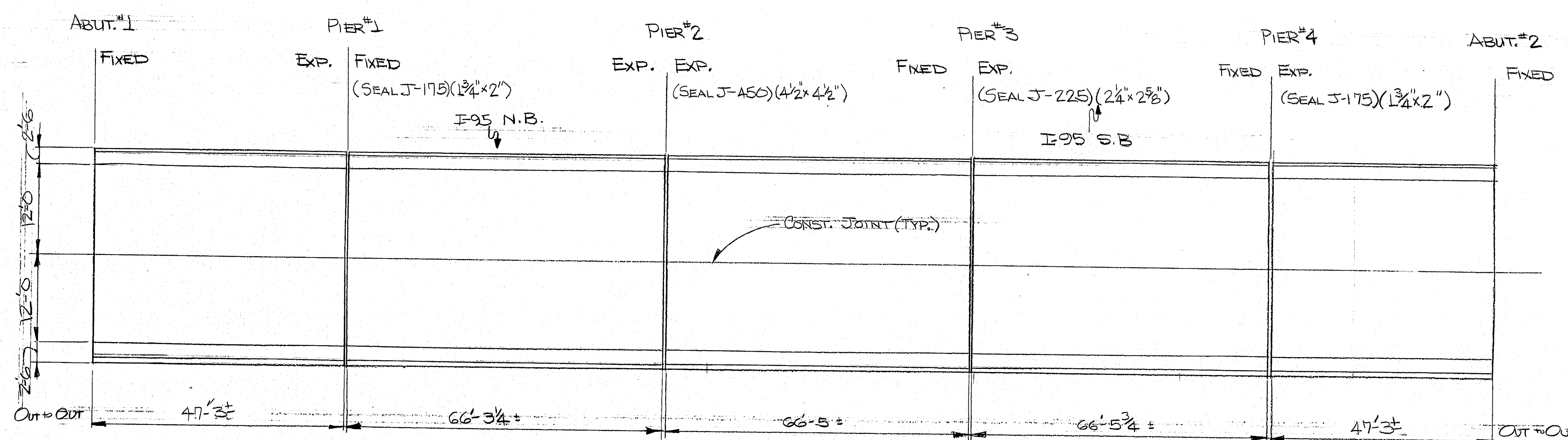


| F.R.W.A.<br>REV. NO. | STATE | PROJECT NUMBER | SHEET<br>NO. | TOTAL<br>SHEETS |
|----------------------|-------|----------------|--------------|-----------------|
| 1                    | MAINE |                |              |                 |



GENERAL PLAN

BONDING GROUT

The deck surface must be thoroughly sandblasted and cleaned to remove all dust or loose materials immediately before the bonding grout is placed.

Deck surface to be surface dry with no standing water in pockets or low areas when bonding grout is applied.

The bonding grout shall consist of equal parts by weight of Portland Cement and concrete sand with the plus No. 8 material removed and mixed with enough water to give a thick creamy consistency.

Bonding grout to be evenly broomed onto the concrete surface ensuring that the entire surface is coated and that no excess grout collects in low spots or pockets. Grout shall be thoroughly broomed under and around reinforcing bars.

Rate of application must be controlled so that the grout does not dry before the new concrete is placed.

GENERAL NOTES

1. Remove existing wearing surface.
2. If main slab steel is exposed, concrete should be removed under the steel to a depth of 1" minimum.
3. Blast clean the slab before any placement of bonding grout or concrete. **NOTE:** Slab is to be surface dry before placement of bonding grout.
4. Broom on a layer of bonding grout just prior to placing concrete. See note this sheet for bonding grout specifications.
5. Concrete to be cured using burlap and water or other approved methods.
6. Concrete to be Class "Y" and aggregate to be crushed ledge.

NOTE:

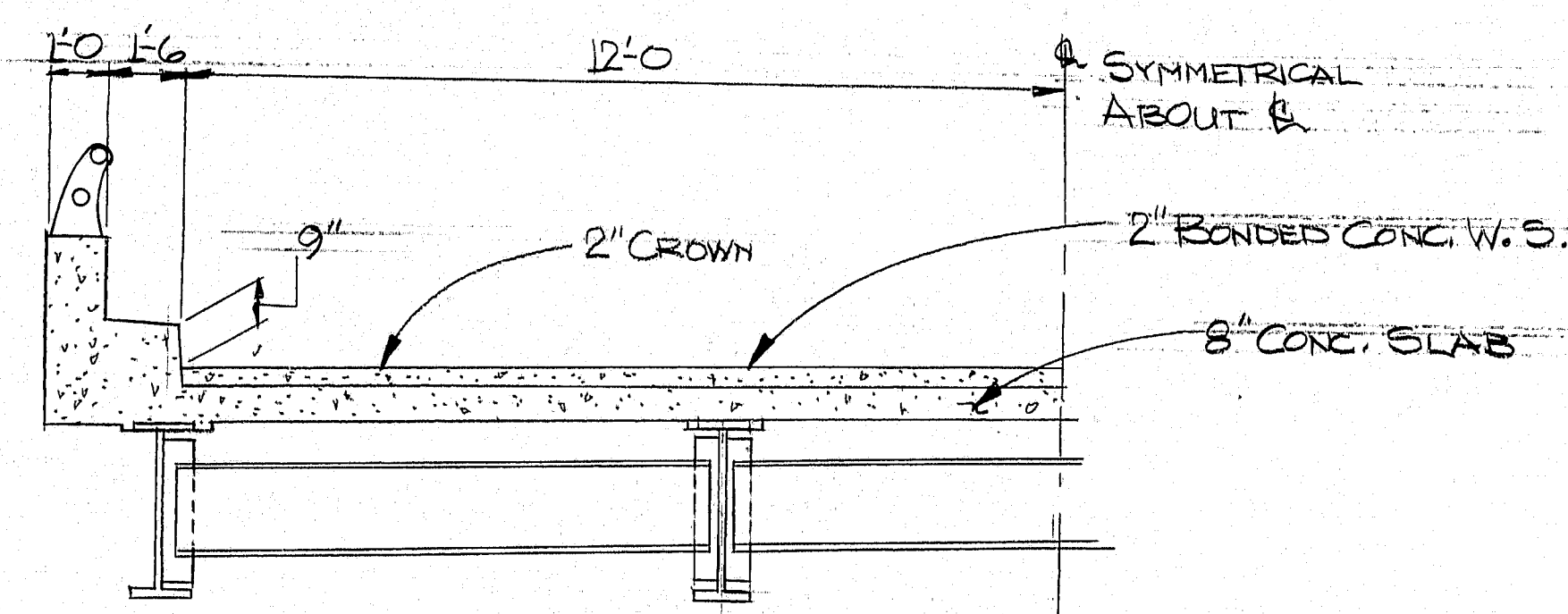
REMOVE & RESET EXISTING JOINT @ PIERS #2, 3, & 4 TO ALLOW PROPER INSTALLATION OF SEALS.

MATERIALS

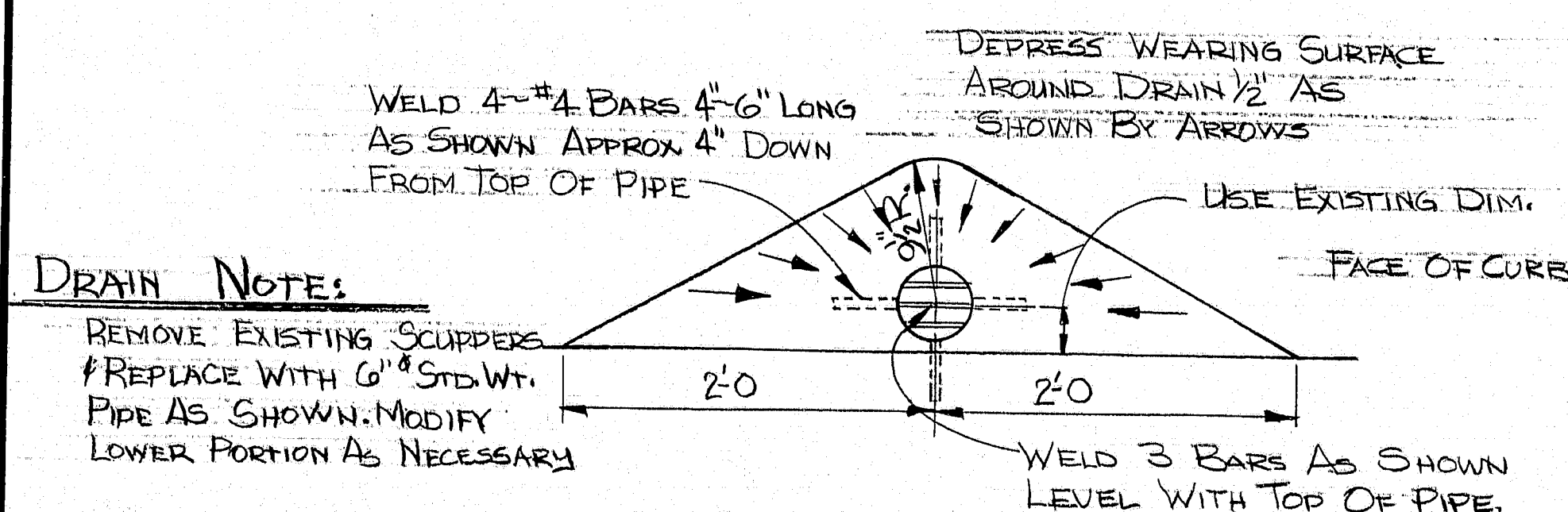
- 100 REQ'D 2-BAR 1/4" x 1/4" x 1'-0" (KEEPERS)
- AS REQ'D 6" STD. WT. PIPE (DRAINS)
- 2 REQ'D PREFORMED JOINT SEAL (J-175 x 31'-0")
- ONE REQ'D PREFORMED JOINT SEAL (J-225 x 31'-0")
- ONE REQ'D PREFORMED JOINT SEAL (J-450 x 31'-0")

CONCRETE

$$\frac{21' \times 29'3" \times .25}{27} = 65.1 \text{ yd}^3 \text{ Say } 66 \text{ yd}^3$$



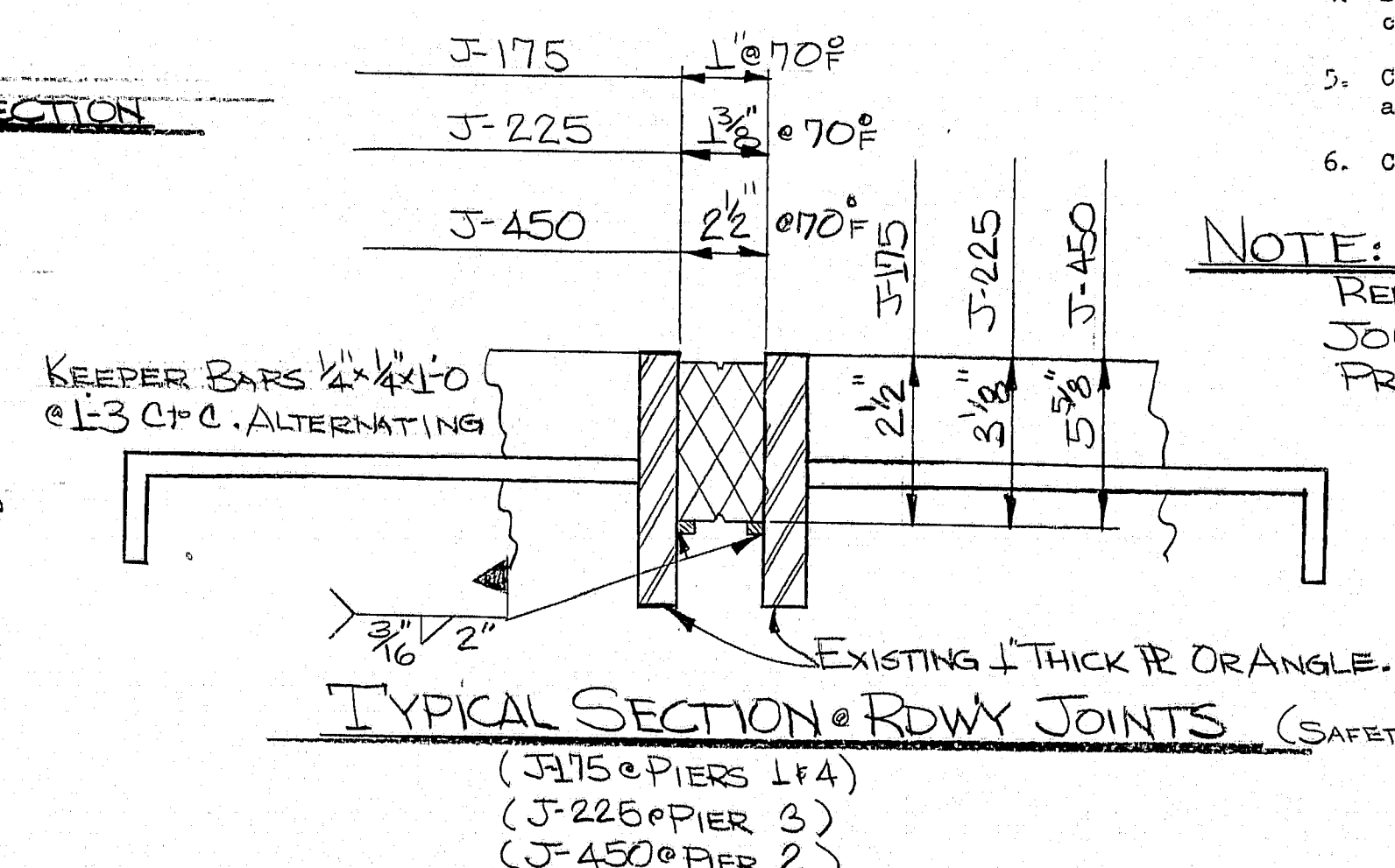
HALF TRANSVERSE SECTION



DRAIN NOTE:

REMOVE EXISTING SCUPPERS & REPLACE WITH 6" STD. WT. PIPE AS SHOWN. MODIFY LOWER PORTION AS NECESSARY.

TYPICAL DRAIN SLOPE DETAIL



TYPICAL SECTION @ ROWY JOINTS (SAFETYWALK SECTION SIMILAR)

(J-175 @ PIERS 1 & 4)  
(J-225 @ PIER 3)  
(J-450 @ PIER 2)

STATE OF MAINE  
DEPARTMENT OF TRANSPORTATION

#5906  
FOREST AVENUE  
OVER  
I-95  
IN THE TOWN OF  
ORONO

IN  
PENOBSCOT CO.  
WEARING SURFACE & SEAL  
SHEET 1 OF 1 AUGUSTA, MAINE 6-3-82

179-187